



Temelsan[®]

CAP-41 CAPPING MACHINE USER MANUAL



Congratulation to your new TEMELSAN Capping Machine CAP-41

INDEX

BASIC INFORMATIONS	2
APPROPRIATE USE	2
WARRANTY AND LIABILITY	2
SAFETY	3
QUALIFIED PERSONNEL	3
PLANNING AND SET-UP	3
OPERATIONS	3
AREAS OF USAGE	3
MAINTENANCE	3
ISSUES	4
SAFETY MEASURES RELATED WITH THE MACHINE	5
REQUIREMENTS OF WORKING PLACE	5
FIRST CONNECTIONS	6
POWER SUPPLY	6
PRESS-AIR REQUIREMENTS	7
FIRST INSTALLATION AND ADJUSTMENTS	7
START-UP THE MACHINE	7
OPERATION STEPS	8
SERVICING	10
EQUIPMENTS	11
PNEUMATIC SCHEME	12
ELECTRICAL SCHEME	13

BASIC INFORMATIONS

This manual user guide is prepared to be useful in order to get familiar with the machine and the functions of the machine. By the help of this manual guide, the operator becomes a capable to use the machine in an optimal way in order to operationalize safely, ergonomically and properly.

This manual user guide allows the operators not to take risk, minimize the idle and repair time. It also helps to increase lifetime of the machine.

This manual user guide should be kept in a proper place and be accessible easily when needed. The local regulations included safety and environmental requirements must be followed in addition to the statements based on this manual user guide.

In case of an issue, complaint, request, demand on spare parts etc. please note the following information along with the below message

Concerning following Object:

Machine Model: TEMELSAN CAP-41

Mfg. year: 2018

Serial Number: _____

APPROPRIATE USE

The machine is designed to cap 27,34 and 41mm of all kinds of band saw blades such as wood, bi-metal, carbon, etc. and the steel bands.

In the event of using the machine rather than described in which case the machine would be out of warranty situation of Temelsan.

WARRANTY AND LIABILITY

In the event of involving a personal injury or physical damages are not covered by the warranty if the following events occur as below.

- Using the machine for a purpose rather than intended
- Technically, improper installation, start-up operation or maintenance of the machine
- In the act of using the machine while any of safety equipment is a broken or protective device inappropriately running.
- Making constructional changes on running parameters.
- Insufficient control of abrasion parts
- Inappropriate repairs
- The catastrophic failures due to the action of foreign objects / Bodies and excessive force applied

SAFETY

Below safety requirements must be applied without skipping anything and priority case to carry out.

QUALIFIED PERSONNEL

Certain tasks must be carried out on the machine by a professional qualified personnel. Not third parties neither the children should be near the machine working area.

PLANNING AND SET-UP

Planning, transportation, installation, programming, start-up, maintenance, repairs and other works must be done by qualified personnel. Authorized technician must check it also.

The following matters must be noted:

- Technical data and details concerning the permissible use of the machine and its accessories.
- General and specific local preparation and safety measures.
- Personal usage and the use of general safety equipment must be related the norms.
- Especially listed on this manual guide but specifically not listed in the operating instructions that has been explicitly forbidden. Such as a handicapped to use the machine is such cases it is necessary to contact the manufacturing company.

OPERATIONS

Dangers hidden in disregards of safety regulations.

AREAS OF USAGE

The Capping machine Temelsan CAP-41 is used for any kind of steel bands and band saw blades or bi-metal or carbide tipped band saw blades.

The capping capacity for Band Saw Blades is from minimum 27mm up to a maximum 41mm.

The machine is capable to cap all kinds of band saw blades which are called carbon, wood, bi-metal, CT Work on the electrical power supply is only to be done by professional electrician.

The machine need to be assembled on floor.

The machine can be set-up by the customer's own staff if officially approved by Temelsan.

Please read the following sections thoroughly and carefully before the initial start-up and ensure that you clearly understand it.

MAINTENANCE

In order to insure a safe operation on the machine and prevent accidents, the job listed in the section "Servicing" must be carried out regularly. If the owner of machine is not in a position to do that also must be arranged by an authorized service agent.

ISSUES

The machine must be switched off at once in case of any problem occurs during the operation and then locked for not being restarted accidentally by an unauthorized person.

The machine must be switched off in this case.

- Unusual sounds, vibrations, smells
- Increased temperatures or power consumption



WARNING!

Only suitably qualified personnel must service the machine!



EMERGENCY

ATTENTION!

Note the following at emergent cases (fire, explosions, breakage):

- Cut the machine off from the mains power supply at an external main switch or external fuses
- Switch off the compressed air supply
- Use the fire extinguishers of a suitable type to deal with the fire

SAFETY MEASURED RELATED WITH THE MACHINE**WEAR PROTECTIVE GLASSES!**

Grinding beads produced during grinding work could damage your eyes.

**WEAR GLOVES!**

The sharp edges of the blades can cause hand injuries.

**DANGER OF FIRE!**

Easily inflammable materials could be set alight if they come in to contact with welding sparks

**SWITCH OFF THE MACHINE!**

Cut off machine from the main supply before carrying out setting-up maintenance and servicing work on the machine.

**ATTENTION!**

It's dangerous when contacting parts of the power supply, control and transformer.

REQUIREMENTS OF WORKING PLACE

- Flat and smooth ground
- Required big enough area around the machine
- Environmental conditions
- The client is obliged to local electrical distributor notified technical requirements

FIRST CONNECTIONS

POWER SUPPLY



Make sure that the main switch of the machine is on OFF position and prevent to be turned on by an accident.

A qualified electrician must do the connection.

The input voltage (standard norm) is 220V AC (1 Phase + Neutral + Ground) 50Hz.

The recommended power supply cable is 3x1,5mm

RST marks for phase connections, N mark is Neutr Connection and Yellow Green cable is for Earth connection.

The Diameter of each wire for power supply it's very important, please use the chart by selecting the Machine Type

Do not switch ON the machine before the all setup instruction is read and work performed



ATTENTION!

Pay special attention to protect yourself from the energized cables moreover the control panel while operating the machine. Keep closed the cover of electrical control panel and do not forget to take out all the foreign objects in the cabinet which might cause short circuit.



WARNING!

- Machine has own electric connection cable.
- The electrical equipment of the machine must be checked regularly
- Remove at once any loose or worn cables
- The customer is required to comply with the technical conditions and requirements of the relevant electrical power supply company

PRESS-AIR REQUIREMENTS

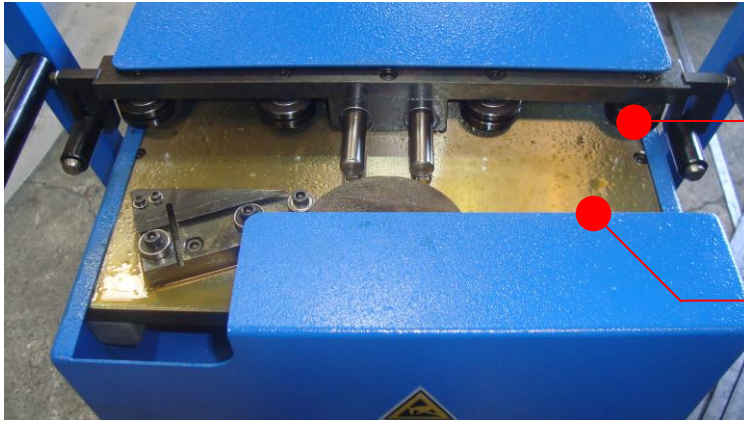
The machine needs dry and clean air pressure, which needs 4-6 bars. The reservoir capacity of the air compressor should be at least 100 liters.

FIRST INSTALLATION AND ADJUSTMENTS

Authorized professionals, who must read this user guide, must do first installation and adjustments. In case of questions, is an immediately contact with manufacturer/supplier required.

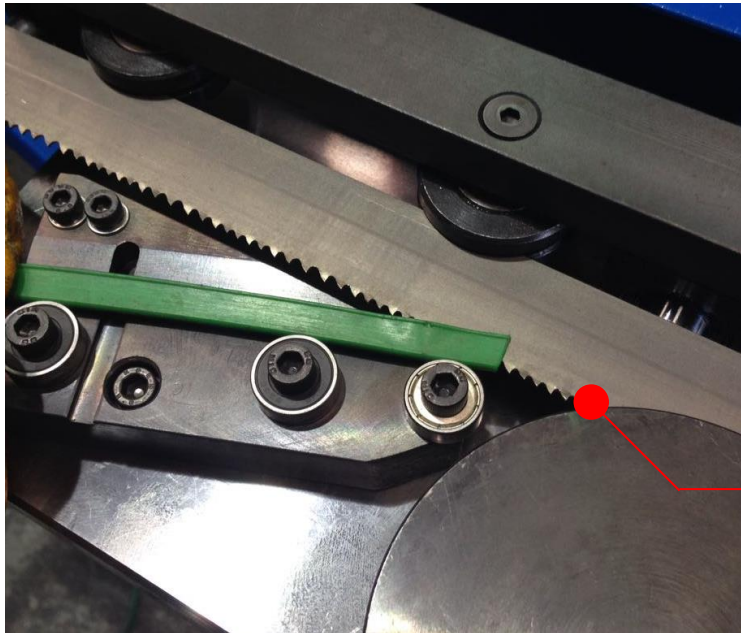
START-UP THE MACHINE

1. Fix the electrical connection on 220 V AC socket.
2. Turn the main power switch to ON



BACK EDGE
SIDE

TOOTH HAS TO BE
ON THIS SIDE



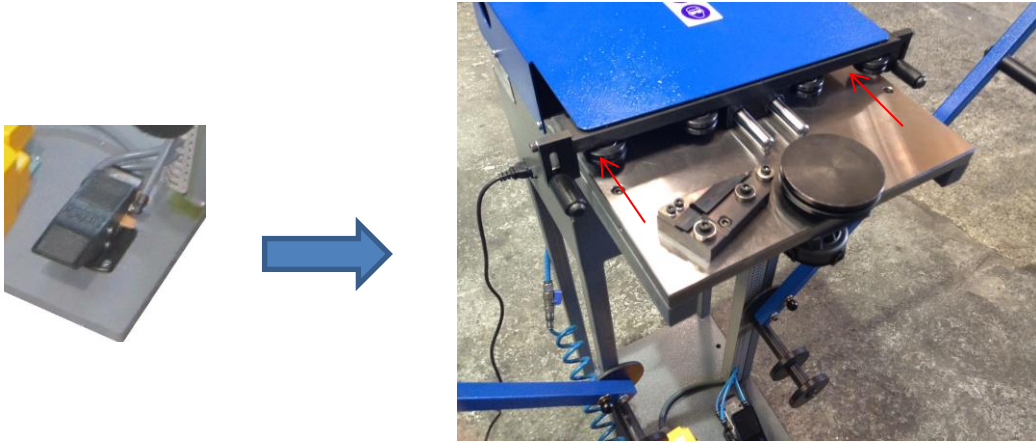
TOOTH HAS TO BE
REPLACED ON THIS WAY
(ALWAYS NEED TO BE ON
ROTATE DIRECTION)

OPERATION STEPS

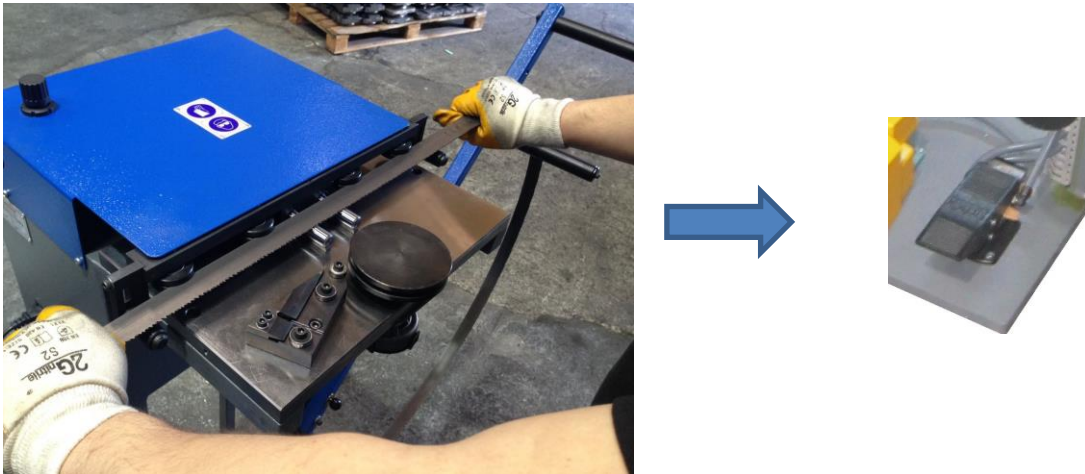
- 1- Switch on the machine (white light above main switch should go on)



- 2- Open the clamping by pushing the “CLAMPING OPEN-CLOSE PEDAL” (keep pressed)



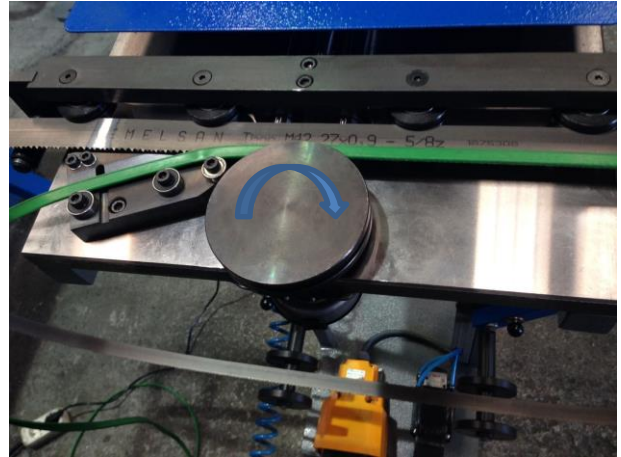
- 3- Place your Band Saw and patched cap for band saw and leave the pedal



- 4- Replace your capping plastic on the place



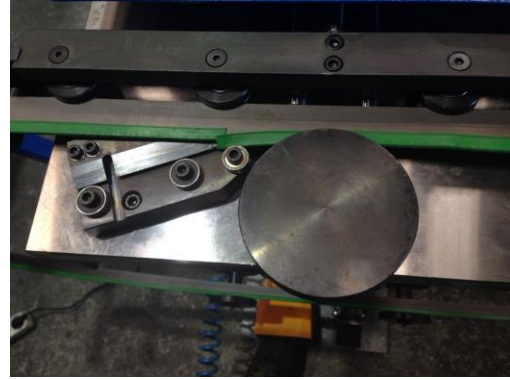
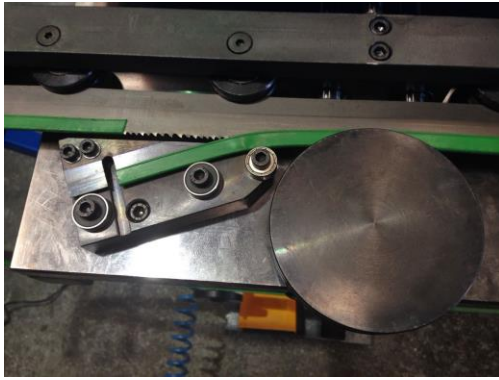
- 5- Start the Capping by pushing the “**MOTOR START-STOP PEDAL**” (keep pressed)



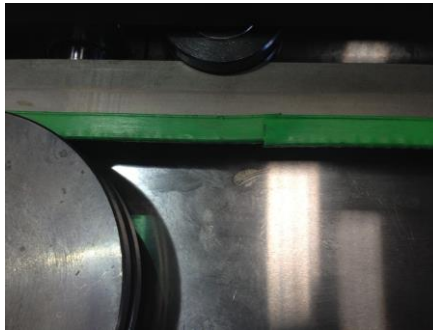
- 6- Leave the “**MOTOR START-STOP PEDAL**” to pause the capping and cut the plastic with the knife



- 7- Push the “**MOTOR START-STOP PEDAL**” to continue the capping



- 8- Open the clamping by pushing the “**CLAMPING OPEN-CLOSE PEDAL**” (Keep pressed until you remove your bandsaw from desk)



- 9- Move your band saw to finish operation

SERVICING

Temelsan will supply the necessary spare parts or consumables in case of mal-function or maintenance as soon as the customer informs.

TEMELSAN MAKİNA SAN. VE TİC. LTD. ŞTİ.

Akçaburgaz Mah. Muhsin Yazıcıoğlu Cad. No:55/1 Esenyurt / İstanbul / TÜRKİYE

TEL: +90 (212) 544-2518 FAX: +90 (212) 577-6557 www.temelsan.com temelsan@temelsan.com

EQUIPMENTS**PRESSURED AIR REGULATOR
AND MANOMETER****ELECTRIC CONNTECTION
INCLUDED POWER CABLE****MAIN ON/OFF SWITCH****MOTOR
START-STOP
PEDAL****CLAMPING
OPEN-CLOSE
PEDAL**

ELECTRICAL SCHEME
